

## KEY BENEFITS

- Unique mode and site of action with Zoxamide - Good resistance management tool
- Synergy between Zoxamide and Mancozeb
- No tank mix partner required - Fungal protection in one bag
- Excellent rainfastness - Binds to waxy cuticle in 1 hour
- Zoxamide activity on developing zoospores
- Zoxamide protects against tuber blight
- Excellent rating for Early Blight control in EU trials over several years
- Low 3-day Pre-Harvest Interval (PHI) for harvest flexibility

## ZOXAMIDE PROVIDES TWO LEVELS OF PROTECTION FOR YOUR POTATO CROP

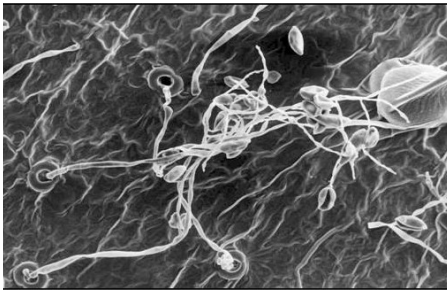
Zoxamide kills fungal zoospores before they are released from the sporangia, therefore they cannot create new foliar infections or land on the soil and be washed into the soil, infecting tubers.

Zoxamide also control zoospores attempting to penetrate the leaf surface by inhibiting cell divisions reducing incidence of new infections.

## LATE BLIGHT STOPPED IN ITS TRACKS BY ZOXAMIDE

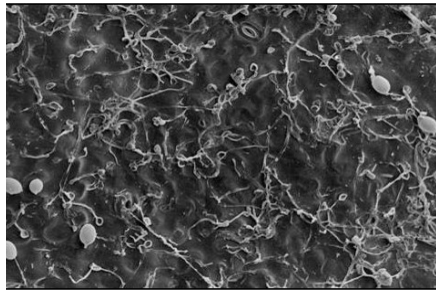
Microscope imagery below shows how Zoxamide suspends the growth of *Phytophthora infestans*:

Untreated Leaf



Infection growing, new sporangia emerging

Zoxamide Treated Leaf



After initial germination, further infection has ceased. Sporangia and zoospore debris seen on surface



## CROPS

Potatoes  
Grapes  
Onions

## DISEASES

Late Blight  
Early Blight  
Downy Mildew



1-800-960-4318  
[gowancanada.com](http://gowancanada.com)

**Gowan**<sup>®</sup>  
CANADA

Gavel<sup>®</sup> is a registered trademark used under license by Gowan Company, L.L.C. ALWAYS READ AND FOLLOW LABEL DIRECTIONS.

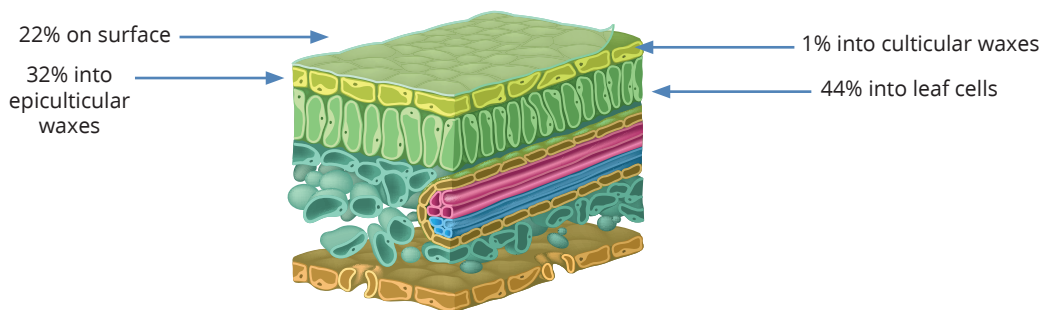
## TECHNICAL INFORMATION

Active Ingredient	Zoxamide + Mancozeb: Groups 22 + M3
Packaging	13.6 KG bag - formulated as a Dry Flowable
Rate	0.7 - 0.9 KG per acre (1 bag treats 15 to 20 acres)
Maximum # of Applications	6 applications per season
Diseases	Late Blight ( <i>Phytophthora infestans</i> ) Early Blight ( <i>Alternaria solani</i> )
Application Timings	1. Just prior to row closure to prevent early blight from getting established, and superior late blight protection during rapid growth 2. Late season tuber blight control, and continued early blight control as nutrient levels fall off in the foliage increasing the susceptibility of the potato plant to early blight
Rainfast	1 hour
Pre-Harvest Interval (PHI)	3 days
Application	Aerial or Ground

Always follow application rates, precautions and restrictions indicated on product label instructions

## ZOXAMIDE POTATO LEAF UPTAKE

Carbon labelled zoxamide applied to a potato leaf to show how well it penetrates the leaf, with 44% of the labelled active ingredient made it right into the leaf cell.



For more information on **Gavel DF Fungicide** please contact your local Gowan Canada Sales Representative, call 1-800-960-4318 or visit us online at [gowancanada.com](http://gowancanada.com)

1-800-960-4318  
[gowancanada.com](http://gowancanada.com)

**Gowan**<sup>®</sup>  
CANADA

Gavel<sup>®</sup> is a registered trademark of Gowan Company, L.L.C. ALWAYS READ AND FOLLOW LABEL DIRECTIONS.